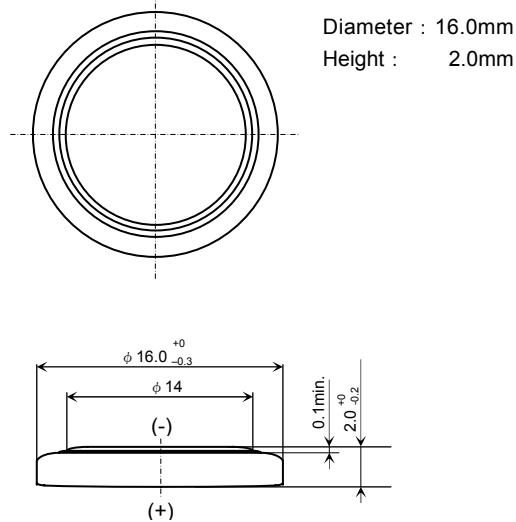


# Lithium Manganese Dioxide Battery

# CR1620

### ■ Dimensions(mm)



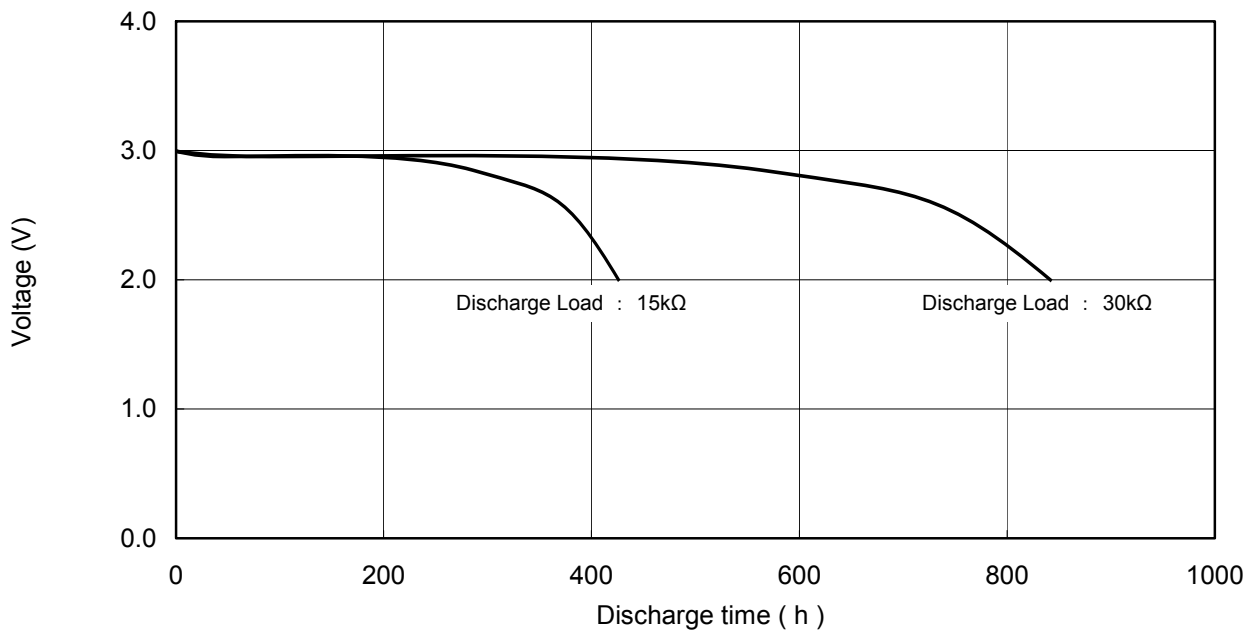
### ■ Specifications

Nominal Voltage	3V
Nominal Capacity ( 2.0V cutoff)	78mAh
Standard Discharge Current	0.1mA
Weight	1.2g

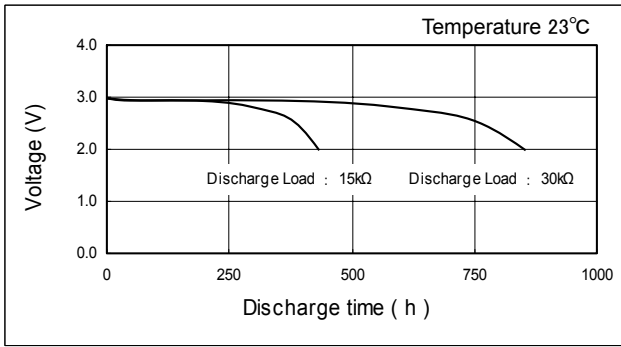
#### Applications

- Electronic Watch or Clock
- Electronic Calculator
- Memory Back-up Power Source for SRAM or Real Time Clock (RTC)

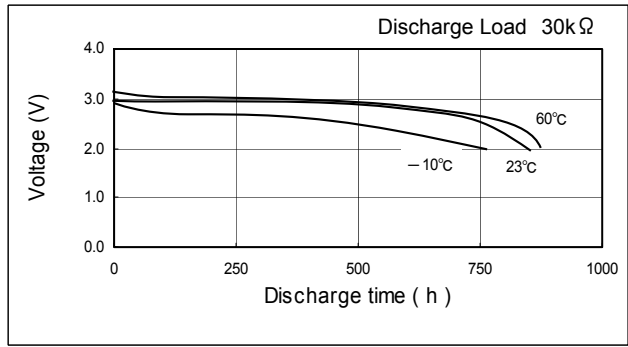
### ■ Discharge Characteristics



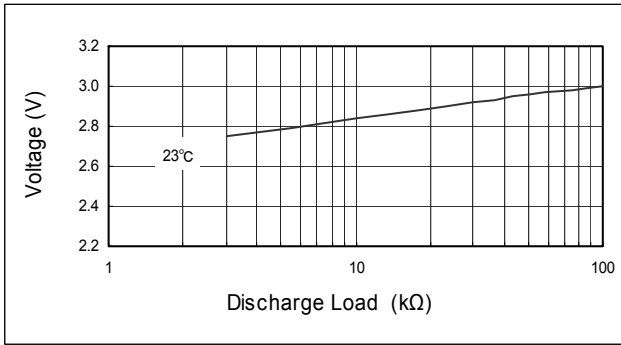
■ Discharge Characteristics on Load



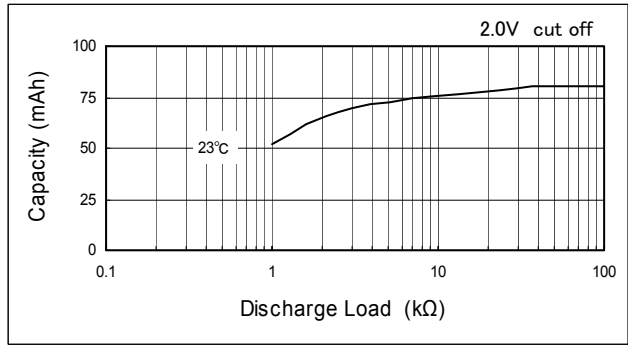
■ Discharge Characteristics on Temperature



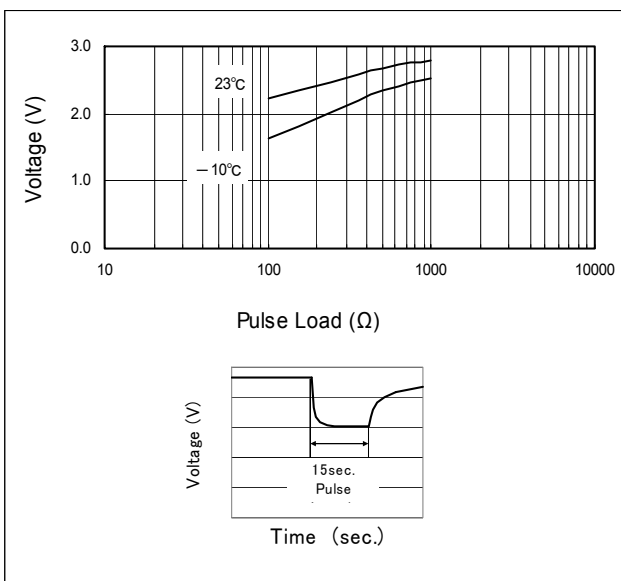
■ Discharge Load vs. Operation Voltage (Discharge depth 40%)



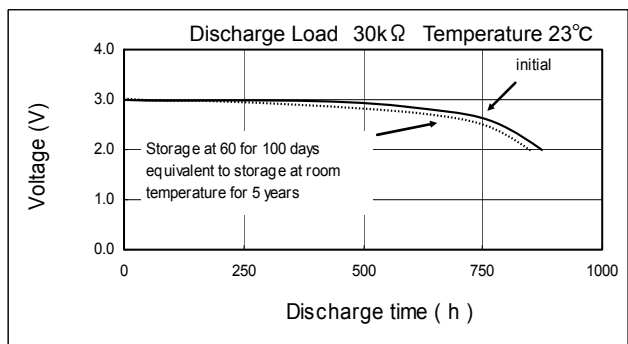
■ Discharge Load vs. Discharge Capacity



■ Discharge Characteristics on Pulse Load (Discharge depth 40%)



■ Storage Characteristics



\* These values are not guarantee.