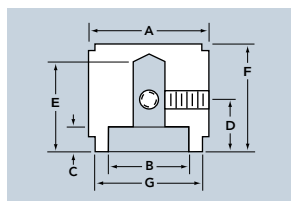


# MACHINED ALUMINUM KNOBS



PV SERIES



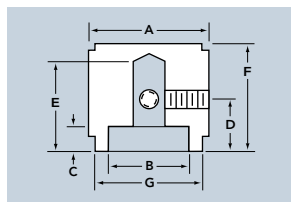
Part Number

Style	A Diam.	B Diam.	C Height	D Height	E Height	F Height	G Diam.	2 Set Screws
PV-12	.50	.375	.160	.29	.510	.62	.450	6-32
PV-19	.75	.590	.160	.29	.510	.62	.695	6-32
PV-25	.93	.708	.160	.29	.510	.62	.885	6-32
PV-32	1.25	.984	.160	.29	.510	.62	1.195	6-32

PV Series knobs come in a Natural or Black Anodized finish.



PB SERIES



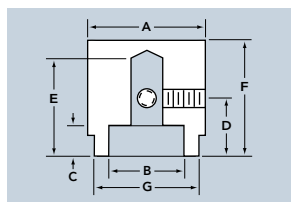
Part Number

Style	A Diam.	B Diam.	C Height	D Height	E Height	F Height	G Diam.	2 Set Screws
PB-12	.50	.375	.120	.33	.640	.79	.450	6-32
PB-19	.75	.590	.120	.33	.640	.79	.710	6-32
PB-25	.93	.708	.120	.33	.640	.79	.885	6-32
PB-32	1.25	.984	.120	.33	.640	.79	1.195	6-32

PB Series knobs come in a Natural or Black Anodized finish.



PVL SERIES



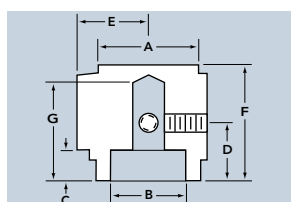
Part Number

Style	A Diam.	B Diam.	C Height	D Height	E Height	F Height	G Diam.	2 Set Screws
PVL-12	.50	.375	.157	.29	.510	.62	.445	6-32
PVL-19	.75	.590	.157	.29	.510	.62	.695	6-32
PVL-25	.93	.708	.157	.29	.510	.62	.885	6-32
PVL-32	1.25	.984	.157	.29	.510	.62	1.195	6-32

PVL Series knobs come in a Natural or Black Anodized finish.



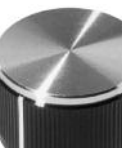
PKP SERIES



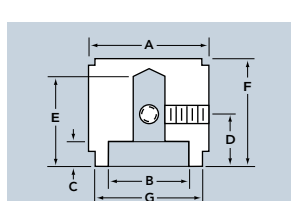
Part Number

Style	A Diam.	B Diam.	C Height	D Height	E Radius	F Height	G Height	2 Set Screws
PKP-12	.50	.375	.120	.32	.375	.63	.510	6-32
PKP-19	.75	.590	.120	.32	.510	.63	.510	6-32
PKP-25	.93	.708	.120	.32	.629	.63	.510	6-32

PKP Series knobs come in a Natural or Black Anodized finish.



PV TWO-TONE SERIES



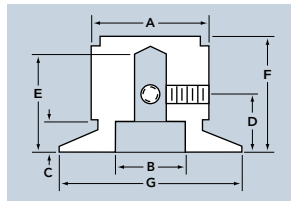
Part Number

Style	A Diam.	B Diam.	C Height	D Height	E Height	F Height	G Diam.	2 Set Screws
PV-12 BA	.50	.375	.160	.29	.510	.62	.450	6-32
PV-19 BA	.75	.590	.160	.29	.510	.62	.695	6-32
PV-25 BA	.93	.708	.160	.29	.510	.62	.885	6-32
PV-32 BA	1.25	.985	.160	.29	.510	.62	1.195	6-32

PV Two-Tone Series knobs come in a Natural and Black Anodized finish.



PVS TWO-TONE SERIES



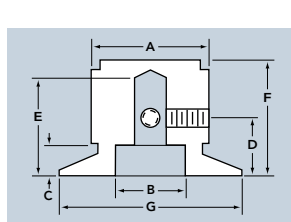
Part Number

Style	A Diam.	B Diam.	C Height	D Height	E Height	F Height	G Diam.	2 Set Screws
PVS-12 BA	.50	.375	.177	.29	.510	.62	.750	6-32
PVS-19 BA	.75	.590	.177	.29	.510	.62	1.120	6-32
PVS-25 BA	.93	.708	.177	.29	.510	.62	1.640	6-32

PVS Two-Tone Series knobs come in a Natural and Black Anodized finish.



PVS SERIES



Part Number

Style	A Diam.	B Diam.	C Height	D Height	E Height	F Height	G Diam.	2 Set Screws
PVS-12	.50	.375	.177	.29	.510	.62	.750	6-32
PVS-19	.75	.590	.177	.29	.510	.62	1.120	6-32
PVS-25	.93	.708	.177	.29	.510	.62	1.640	6-32

PVS Series knobs come in a Natural or Black Anodized finish.

EXAMPLE: PB-12A-1

Series	Diameter	Finish	Shaft Hole
	.500	Natural	1/8" Round
PB	12	A	1

## ORDERING GUIDE FOR MACHINED ALUMINUM SERIES

Series	Diameter	Finish/Color	Shaft Hole
PB	12- 1/2"	A- Clear Anodize	1- 1/8" Round
PV	19- 3/4"	B- Black Anodize	2- 1/4" Round
PKP	25- 15/16"	BA- 2-tone	
PVL	32- 1 1/4"		
PVS			

All of the above knobs are available for .125" and .250" shaft sizes.



x= outer diameter  
y= height



378 B10  
x=.64  
y=.39



232 B01  
x=.51  
y=.68



264 B11  
x=.52  
y=.65



265 B11  
x=.77  
y=.77



611 B11  
x=.76  
y=.63



612 B12  
x=.76  
y=.86



261 B21  
x=.83  
y=.57



490 B21  
x=.77  
y=.71



153 B21  
x=.83  
y=.57



1047 B23  
x=.89  
y=1.03



1097 B31  
x=1.14  
y=.76



2684 B31  
x=1.33  
y=.70



2779 B32  
x=1.17  
y=.88



324 B31  
x=1.13  
y=.51



379 B41  
x=1.61  
y=.83



296 B41  
x=1.40  
y=.64



112 D21  
x=1.13  
y=.66



6 D31  
x=.91  
y=.57



1325 D31  
x=1.13  
y=.67



329 D40  
x=1.51  
y=.49



1706 D42  
x=1.52  
y=.89



405 F10  
x=.56  
y=.34



471 F10  
x=.77  
y=.48



474 F21  
x=.84  
y=.61



475 F31  
x=1.03  
y=.67

x= outer diameter  
y= height



472 F31  
x=1.27  
y= .67



385 F42  
x=1.26  
y= .64



404 F21  
x=.86  
y=.58



374 F31  
x=1.20  
y= .70



406 F41  
x=1.44  
y= .77



98 M21  
x=.89  
y= .64



438 M30  
x=1.12  
y= .40



319 P00  
x=.41  
y=.39



699 P00  
x=.42  
y=.39



228 P00  
x=.35  
y=.51



688 P01  
x=.44  
y=.78



1 P10  
x=.79  
y=.40



344 P11  
x=.72  
y=.77



138 P11  
x=.77  
y=.70



3220 P22  
x=1.52  
y= .89



173 P30  
x=1.27  
y= .52



375 P41  
x=1.30  
y= .62



3000 R00  
x=.40  
y=.40



408 R00  
x=.52  
y=.64



410 R01  
x=.51  
y=.64



431 R01  
x=.52  
y=.64



353 R10  
x=.51  
y=.41



310 R10  
x=.63  
y=.51



227 R11  
x=.52  
y=.52



380 R11  
x=.52  
y=.77

x= outer diameter  
y= height



1789 R11  
x=.55  
y=.65



229 R11  
x=.55  
y=.70



393 R11  
x=.61  
y=.67



695 R11  
x=.71  
y=1.00



1715 R11  
x=.77  
y=.76



395 R21  
x=.77  
y=.67



426 R21  
x=.82  
y=.74



686 R21  
x=.89  
y=.64



634 R21  
x=.92  
y=.76



2300 R22  
x=.75  
y=.83



107 R30  
x=1.05  
y=.52



188 R31  
x=.95  
y=.64



445 R31  
x=1.39  
y=.54



3926 R33  
x=1.52  
y=1.83



PMS91528-2  
x=.54  
y=.69



M3926/3A-1  
x=1.02  
y=1.03



M3926/1A-O  
x=.77  
y=.72



M3926/1A-3  
x=1.52  
y=1.85

Visit our web site, [ehcknobs.com](http://ehcknobs.com)  
to see our entire line of

# Soft Touch

*EHC's can manufacture your knobs with Soft Touch finishes. We offer standard and custom colors. Even get them with your custom markings.*

## Instrument Style Knobs



## Over-molded Knobs



## Push-on Knobs



## Rounded Fluted Knobs

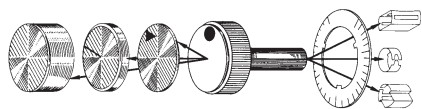


## Squared Fluted Knobs



*Visit Clamp Knobs on our web site and see our lines of Soft Touch clamping knobs. We manufacture over-molded knobs in a wide range of standard sizes. Choose from brass inserts, brass insert thru holes, or stainless steel studs. We carry a full complement of both English and metric sizes. Materials and custom options are available if you require them.*

# Consumer Push-On Knobs



CUSTOMIZING OPTIONS [PAGES 24 through 25](#)



KC AUDIO KNOBS & CAPS [PAGE 26](#)



ROUND PUSH-ON KNOBS [PAGES 27 through 30](#)



PUSH-ON DIAL KNOBS [PAGE 31](#)



PUSH-ON POINTER KNOBS [PAGE 32](#)



PUSH-ON BAR KNOBS [PAGE 33](#)



FLUTED PUSH-ON KNOBS [PAGE 34](#)



BUTTONS & SLIDERS [PAGE 34](#)



OVEN & GRILL KNOBS [PAGE 35](#)



BUMPERS [PAGE 35](#)





MS SERIES PUSH-ON KNOBS PAGE 38



DESIGNER SERIES PUSH-ON KNOBS PAGE 38



RS SERIES PUSH-ON KNOBS PAGE 39



CS SERIES PUSH-ON KNOBS PAGE 40



3000 SERIES PUSH-ON KNOBS PAGE 40



TRADITIONAL SERIES PUSH-ON KNOBS PAGE 41



CORONADO SERIES PUSH-ON KNOBS PAGE 41



GEMINI SERIES PUSH-ON KNOBS PAGE 41



SPECIAL KNOBS PAGE 42

TECHNICAL DATA PAGE 43

MECHANICAL TOLERANCES PAGE 44

If we've learned one thing in our more than 50 years of business, it's this: the mind of man has an endless capacity to dream — and to turn those dreams into reality.

Ideas that were science fiction when we started out in business are now commonplace products in millions of homes.

We've also learned that men who have dreamed the dreams and found ways to make them come true, are, for the most part, dedicated, demanding perfectionists — perfectionists who expect every detail to coincide with their ideas.

## COMPLETE IN-HOUSE OPERATION

We are proud to have earned a reputation as a company with the ability to respond to the most exacting specifications and to surpass every expectation. We attribute a lot of it to the fact that every phase of production is handled in-house.

We do our own design and engineering, prototyping, our own tool making, plastic molding, screw machining, metal fabrication, automatic drilling and tapping, hot stamping, silk screening, laser etching, photo etching, painting, finishing, and much more.

## THE HIGHEST QUALITY WITH THE SHORTEST LEAD TIME

We control every aspect of production. This allows us to remain competitive while also producing the highest quality product. We can maintain an extremely high level of quality control, as well as, meet the tightest delivery schedule requirements.

## STOCK AND SPECIAL TOOLING

Naturally we offer a complete line of stock tooling as well as the ability to modify existing molds. But, just as important, we can tool from scratch — to your original designs.

We can make knobs and dials no matter what that knob or dial might be — whatever

it might look like. If you can enclose a plastic part in your hand, we can mold it better, faster and more efficiently by the use of our universal pocket molds. This means that our customers can take advantage of tooling, a cavity or core only, at low cost, yet still have production costs of a multi-cavity mold.

## ANY SIZE, ANY SHAPE

Our standard knobs come in sizes from 1/4 to 3 inches in diameter. And, while they come in an infinite variety of shapes, if you need one that's different, we can design and make it for you. We already make knobs to fit just about every shaft that there is.

## MATERIAL

Unless you require a specific material, all Electronic Hardware knobs and dials are molded thermoplastic. So, you get knobs that have the characteristics that you need — knobs that are strong, heat resistant, and have dimensional stability. But, we also can make knobs from any thermoplastic or thermoset material that you request.

## TRIM

We'll add any kind of inlay or cap, diamond cut, decorative, spun, formed cap, whatever. Or, any finish: metallic to mylar.

*On the following pages you'll find many of the standard knobs and dials that we make. But if you don't see what you're looking for, give us a call — because we can make exactly what you need.*

## SECONDARY OPERATION

We make it possible for your part to be molded and finished under one roof. Silk screening, sonic welding, automatic drilling and tapping, hot stamping, pad printing, spray painting, laser engraving and solvent bonding are all options that are readily available. We're prepared to do it immediately — with quality. This all translates into competitive piece prices for your parts. *The Bottom Line!*



Universal mold base



Ultrasonic insertion



Pad printing

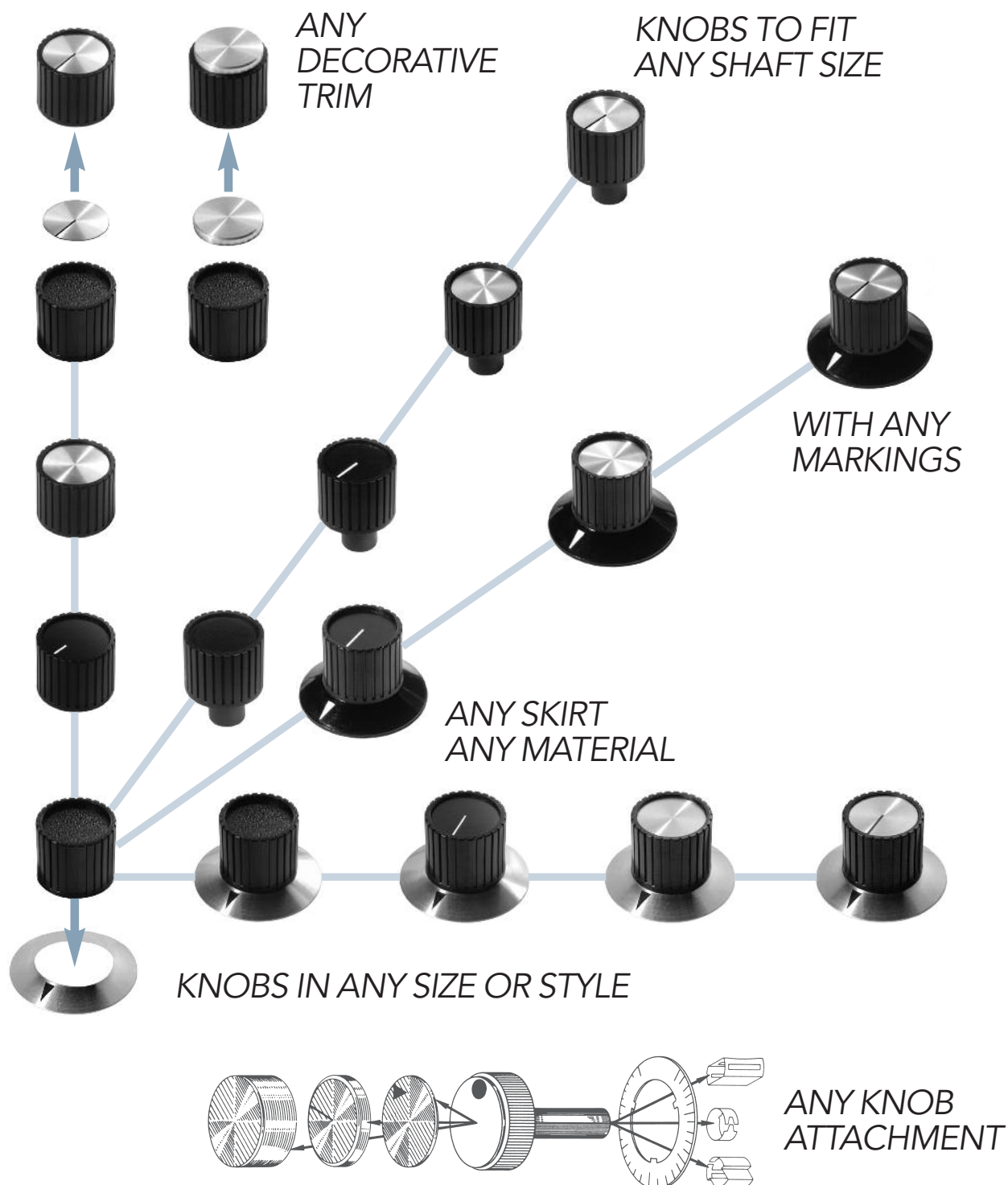


Hand painted markings



# WE CAN MAKE EXACTLY WHAT YOU NEED.

To order your part specify the style number from our catalog or website. Then give us the diameter, the shaft size, the number of set screws, the markings and any additional finishing options you would like.



*For Some Styles Minimum Orders May Apply.*



**ELECTRONIC HARDWARE CORPORATION** 320 Broad Hollow Road, Farmingdale, NY 11735  
PHONE: 631.752.1950 FAX: 631.752.1971 [WWW.ehcknobs.com](http://www.ehcknobs.com) EMAIL: [sales@ehcknobs.com](mailto:sales@ehcknobs.com) **1-800-752-1680**

## Push-On Knobs

x = outer diameter  
y = height



574  
y = .02



568  
x = .45  
y = .53

569  
x = .55  
y = .67



575  
y = .03



570  
x = .73  
y = .69

Available in any color  
with any markings.

## Push-On Knobs

x= outer diameter  
y= height



3000  
x=.40  
y=.40



342  
x=.45  
y=1.27



424  
x=.48  
y=.56



413  
x=.50  
y=.34



353  
x=.51  
y=.41



5CF  
x=.51  
y=.43



227  
x=.51  
y=1.21



227  
x=.52  
y=.52



3008  
x=.52  
y=.62



410  
x=.52  
y=.64



431  
x=.52  
y=.64



232  
x=.52  
y=.69



380  
x=.52  
y=.77



229  
x=.55  
y=.70



484  
x=.59  
y=.45



309  
x=.59  
y=.59



486  
x=.59  
y=.85



249  
x=.61  
y=.64



393  
x=.61  
y=.67



225  
x=.62  
y=.65



310  
x=.63  
y=.51



350  
x=.64  
y=.20



167  
x=.64  
y=.64



373  
x=.71  
y=.52



695  
x=.71  
y=1.00



345  
x=.72  
y=.71



698  
x=.72  
y=.81



71  
x=.73  
y=.67



396  
x=.73  
y=.69



367  
x=.73  
y=.77



518  
x=.75  
y=.78



1428  
x=.76  
y=.64



447  
x=.76  
y=.70



A31  
x=.77  
y=.45



395  
x=.77  
y=.67



121  
x=.77  
y=.77



327  
x=.77  
y=.48



327  
x=.77  
y=.78



376  
x=.80  
y=.42



496  
x=.80  
y=.60



426  
x=.82  
y=.74



416  
x=.83  
y=.47



260  
x=.83  
y=.64



352  
x=.83  
y=.64



3441  
x=.87  
y=.60



90  
x=.89  
y=.64



83  
x=.89  
y=.64



192  
x=.89  
y=.64



292  
x=.90  
y=.61



634  
x=.92  
y=.76

## Push-On Knobs

x= outer diameter  
y= height



253  
x=.93  
y=.45



49  
x=.93  
y=.68



401  
x=.94  
y=.72



96  
x=.95  
y=.20



188  
x=.95  
y=.64



106  
x=.95  
y=.67



257  
x=.96  
y=.56



520  
x= 1.00  
y= .375



248  
x=1.01  
y= .68



289  
x= 1.04  
y= .54



66  
x=1.05  
y= .33



107  
x=1.05  
y= .52



108  
x=1.06  
y= .52



517  
x= 1.06  
y= .78



331  
x=1.10  
y= .52



13  
x=1.11  
y= .54



82  
x=1.14  
y= .36



14  
x=1.14  
y= .45



415  
x=1.15  
y= .35



510  
x= 1.19  
y= .61



45  
x=1.20  
y= .30



47  
x=1.20  
y= .54



282  
x=1.20  
y= .57



210  
x=1.23  
y= .64



92  
x=1.25  
y= .66



## Push-On Knobs

x = outer diameter  
y = height



67  
x = 1.27  
y = .33



412  
x = 1.28  
y = .61



109  
x = 1.33  
y = .52



110  
x = 1.33  
y = .52



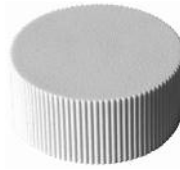
349  
x = 1.35  
y = .56



449  
x = 1.35  
y = .64



445  
x = 1.39  
y = .54



437  
x = 1.40  
y = .55



391  
x = 1.40  
y = .58



418  
x = 1.50  
y = .52



105  
x = 1.51  
y = .54



233  
x = 1.52  
y = .27



341  
x = 1.52  
y = .50



194  
x = 1.57  
y = .57



223  
x = 1.57  
y = .83



462  
x = 1.61  
y = .24



400  
x = 1.77  
y = 1.18



420  
x = 1.80  
y = .58