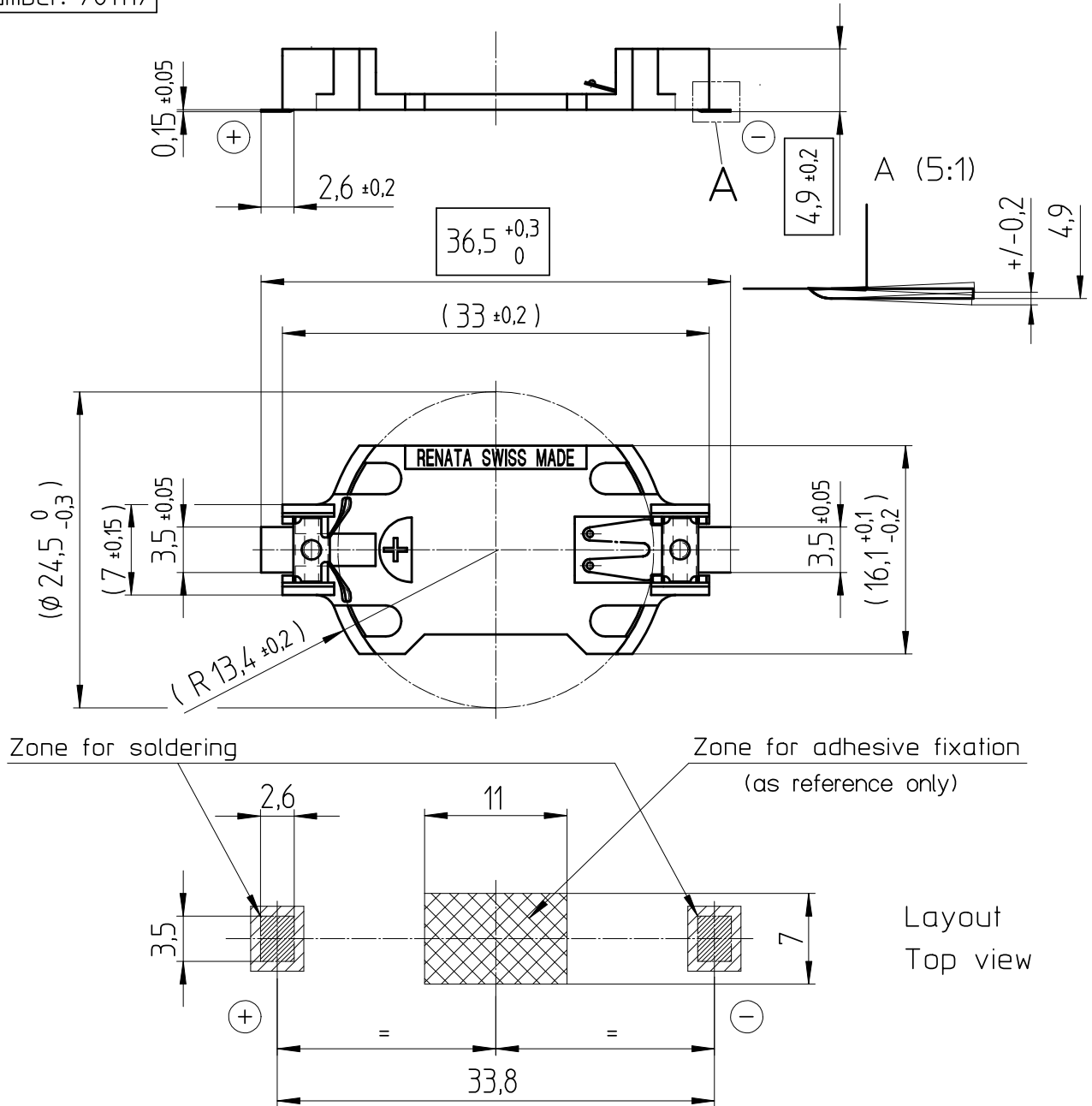


Art.-Number: 701117



- Samples can deviate in the execution from the serie.

- Dimensions and tolerances can be specified only after the testing of the devices for the mass production definitely

- Holder material : heat resistant, glass-fiber reinforced LCP
- Battery contacts : spring stainless steel 301 nickel plated, thickness $10\mu\text{m}$
- Solder contacts : spring stainless steel 301 solder plated throughout 100% Sn, thickness $10\mu\text{m}$

All framed values will be used for dimension checking !

| | | | | | | | |
|----------------------------|----------------------------|----------------------------|--|--------------------------------|---------------------|-----------|-----|
| Rev. <input type="radio"/> | Rev. <input type="radio"/> | Rev. <input type="radio"/> | | | Customer's Approval | | |
| Rev. <input type="radio"/> | Rev. <input type="radio"/> | Rev. <input type="radio"/> | | | Date | | |
| Rev. <input type="radio"/> | Rev. <input type="radio"/> | Rev. <input type="radio"/> | | | Signature | | |
| Titel: | | | | Scale 2:1 | Drawn | 25.01.05 | SRi |
| SMTU2430-LF | | | | | Checked | | |
| | | | | | Approved | 02.02.05 | MHo |
| | | | | CH-4452 Itingen Switzerland | | 3.8761.4- | |