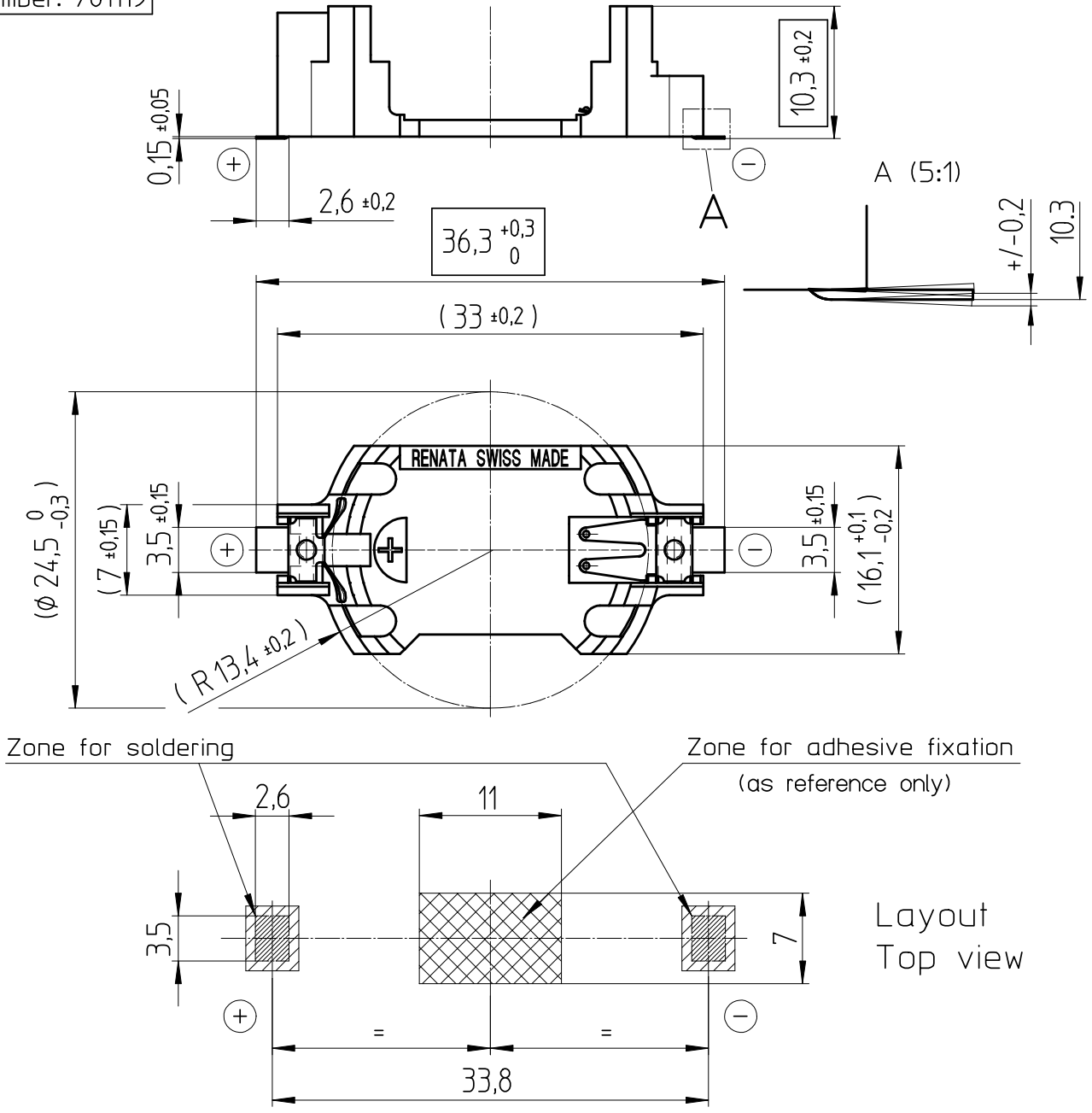


Art.-Number: 701119



- Samples can deviate in the execution from the serie.

- Dimensions and tolerances can be specified only after the testing of the devices for the mass production definitely

- Holder material : heat resistant, glass-fiber reinforced LCP
- Battery contacts : spring stainless steel 301 nickel plated, thickness $10\mu\text{m}$
- Solder contacts : spring stainless steel 301 solder plated throughout 100% Sn, thickness $10\mu\text{m}$

All framed values will be used for dimension checking !

Rev. <input type="radio"/>	Rev. <input type="radio"/>	Rev. <input type="radio"/>			Customer's Approval		
Rev. <input type="radio"/>	Rev. <input type="radio"/>	Rev. <input type="radio"/>			Date		
Rev. <input type="radio"/>	Rev. <input type="radio"/>	Rev. <input type="radio"/>			Signature		
Titel:				Scale 2:1	Drawn	25.01.05	SRi
SMTU2477N-LF					Checked		
					Approved	02.02.05	MHo
				CH-4452 Itingen Switzerland		3.8763.4-	